



Update from the Consortium of Lancashire & Cumbria LMCs

Tuesday 14th January

General Practice Alert State (GPAS)

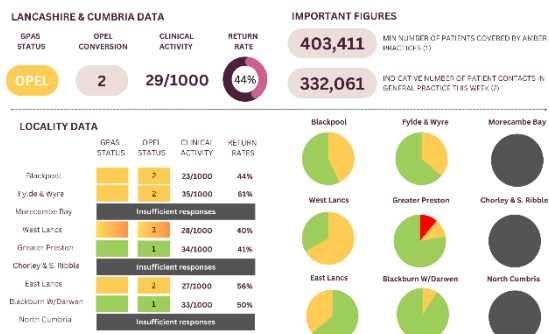
You can see the latest SitRep results below. Results can also be found [on our website](#).

The data we do not receive prevents us from providing a robust picture to system partners and hinders our efforts to push for more support on your behalf.

We really appreciate you taking to the time to help us to help you.

[Please let us know](#) if you are a Practice Manager and do not receive the GPAS input emails.

GENERAL PRACTICE ALERT STATE SITREP | 10.01.2025



A SELECTION OF THIS WEEK'S PRACTICE COMMENTS

One surgery has gone by with staff observations to address another. A number of EMAs and panels of one which will add pressure later in the week when these patients visit in relation to an all Basix with lower IT system. SITREP AND OPEL TO OPEL: Research was staff critical and action of steps, was received by local and LMC support. Patient demand and health.

GPAS CHANGE SINCE LAST SITREP

| Locality | Last SITREP | This Week | Trend | Note |
|---------------------|------------------------|-----------|-------|------------------|
| Blackpool | Amber | 2 | ↓ | OPEL 3 to OPEL 2 |
| Fylde & Wyre | Amber | 2 | ↓ | OPEL 3 to OPEL 2 |
| Morecambe Bay | Insufficient responses | | | |
| West Lancs | Amber | 3 | → | |
| Greater Preston | Green | 1 | ↓ | OPEL 2 to OPEL 1 |
| Chorley & S. Ribble | Insufficient responses | | | |
| Fylde Lancs | Amber | 2 | → | |
| Blackburn W/Darwen | Green | 1 | → | |
| North Cumbria | Insufficient responses | | | |

A QUICK GUIDE TO THE GPAS STATES

- BLACK**: Practice will fail within one month. Urgent system intervention required.
- RED**: Sustainable in the short term. Needs system support.
- AMBER**: Sustainable in the medium term (6 months max). Initially needs system support.
- GREEN**: Fully Sustainable.

LMC NOTE:

Please continue to share your data with us so that we can ensure the system is aware of any capacity and demand concerns pertaining to General Practices.

1. The figures include all 16 areas of the Lancashire and Cumbria region. 2. The figures are based on the data submitted by the practices to the LMC system.

Please let us know if you have any questions/ issues

Smoking Cessation Services - L&SC ICB area

We recently reported that in Lancashire, the LMCs have been receiving reports that patients are being directed to their GP for prescriptions rather than these being issued by smoking cessation services.

Varenicline has been introduced onto the market as a generic medication after the proprietary version (Champix) was withdrawn in October 2021 and we are told by Lancashire County Council that Smoke free Lancashire are unable to prescribe this medication.

The LMC has learned of the ICBs hopes that GPs will soon be able to prescribe Varenicline on FP10, once a prescribing pathway has been agreed. The current pathway, or current working practice being reported, would suggest that 'referrals back to GP' in some cases just involves a patient making an appointment with an expectation of a prescription, which is totally inappropriate.

Without a LIS/LES arrangement in place, practices are **not** funded to undertake this work and we are actively pursuing further consultation on there source implications for this workload shift. Please continue to share evidence of this impacting your practice to support our discussions. We will keep you updated.

Decommissioning of Health Pathways - North Cumbria only

Last week, the LMC wrote to you to inform you of our disappointment at NENC ICBs decision to decommission Community Health Pathways. The LMC have also written to the ICB which you can see [here](#).

To strengthen our collective voice, we are inviting GPs to sign a form to express their concerns about this decision. By doing so, we can emphasise the need for a replacement system that supports the safe and effective care we strive to deliver.

Please click [here](#) to access and sign the form.

North Cumbria Whats App Groups

North Cumbria LMC has introduced an additional WhatsApp group to complement the existing GP Referendum group. This new group provides a dedicated space for practices to report any transfers of work and to engage in discussions with their peers about related issues. By fostering open communication and collaboration, the group aims to ensure that the LMC is promptly informed of challenges faced by practices, enabling better support and advocacy. Practices are encouraged to join and actively participate to share insights and experiences. If you would like to join, please contact [Mikaela George](#).

BMA A&G Update

The BMA explained that the Government has made a number of [announcements](#), including resourcing GPs to deliver Advice and Guidance (A&G) at £20 per episode to be able to sort out clinical issues and queries you have about a patient. At least £80m has been earmarked for A&G use and this is in addition to the £889m announced by the Secretary of State on 20 December.

This is a small positive step and something the BMA had already suggested to the Government. Suspending A&G is one of the items on the BMA [Collective Action menu](#) as an unresourced piece of work, but if this is successfully negotiated into the 25/26 contract and fairly resourced, then it could be dropped from the menu. The BMA have yet to see any detail on how the A&G plan will be rolled out and will advise about this as soon as they can. The BMA are in active discussion with government on this and other contract issues.

The BMA are aware many of you want to see significant investment going into uplifting core contracts, and of course we are all doing more work than ever before, in the knowledge that our share of NHS funding is at a very low level. The BMA will continue to press this issue in our current negotiation meetings.

The BMA hope this is the beginning of NHSE and ICBs making sensible decisions about where it is best to invest, and this seems to be an example of the Government's commitment to increase funding into General Practice. It is a small step forward on the journey to what we really need. But as ever – nothing is agreed until everything is agreed and the BMA are now actively engaged with NHSE and the Department of Health on proposed contract changes for April 2025 and beyond.

The BMA would recommend watching [the video](#) recorded by GPCE Chair, Dr Katie Bramall Stainer, for a full update on the key issues.

BMA January 2025 Collective Action Tracker Survey

The January collective action tracker survey is open and will remain open for two weeks, closing on 26 January at 5pm. Your response to this is hugely helpful to the BMA.

Is your practice taking part in Collective Action? The BMA are encouraging all GP partners or practice managers to share their experiences by completing this [short survey](#). No identifiable data will be created as a result of this survey.

The National Insurance Contributions (NICs) Bill

Following its passage through the Commons, the National Insurance Contributions Bill moved to the House of Lords where it was debated on 6 January. During the debate a motion of regret was tabled, which if agreed would signal the House disagreed with the Bill but would not stop its progress. In the event the motion was not agreed. However, there was significant debate with the BMA mentioned numerous times along with our concerns regarding the impacts of employer NICs increases on practices and patients. The BMA have undertaken extensive lobbying and briefing of Parliamentarians prior to the

debate. The Bill will next go to committee stage in the Lords, where the BMA will continue to lobby.

BMA Guidance on Physician Associates

In response to BMA member queries regarding the future management of physician associates (PAs) within their practices, please note the additional guidance below:

GP practices are entitled to follow [BMA Guidance](#) and [RCGP guidance on employing PAs](#). However, it is for individual practices to decide whether to follow the guidance, and if they do decide to follow it, what steps to take to implement any changes.

A GP practice may decide to restructure how they deliver their services in order to follow the guidance. If such a restructure results in duties being removed from one or more PA in the practice, this could result in a redundancy situation arising, i.e. where there is a reduced requirement for physician associates to carry out work of a particular kind.

BMA and PCSE Webinars for 2023-24 type 2 Pension Forms for Sessional GPs

The BMA have previously highlighted the change of form and upload process for type 2 pension forms for 2023-24. As a salaried GP, out of hours GP or long-

term locum within a practice, you are required to complete a Type 2 Self-Assessment for each pension year, so that NHS England can ensure that all NHS pension contributions have been correctly paid and allocated correctly to the NHS Pension Scheme record.

The relevant forms must be completed by members who have undertaken practitioner pensionable work between 1 April 2023 and 31 March 2024, and should be submitted to PCSE by 28 February 2025. PCSE have scheduled two webinars to explain the new form and the process to upload the forms. The deputy chair of the BMA pensions committee, Krishan Aggarwal, will also be attending the webinars to support member queries. These will be held on:

- Tuesday 14 January 6pm to 7.30pm
- Tuesday 4 February 6pm to 7.30pm

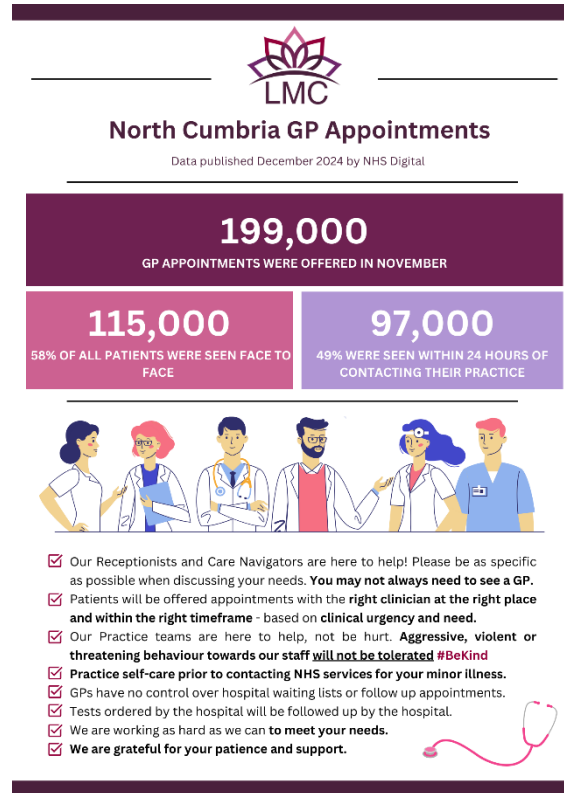
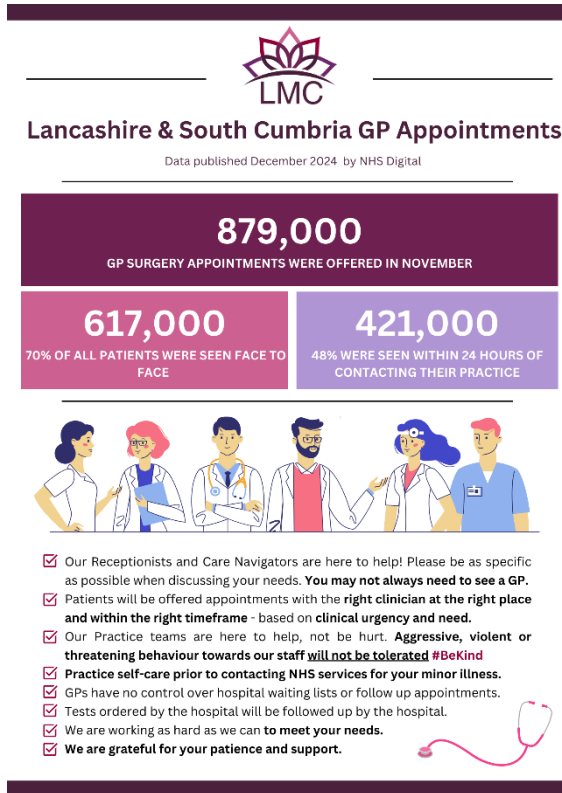
Please click [here](#) to register for the webinars.

General Practice Appointment Infographics - November 2024

We have created infographics for Practices to use in your waiting rooms, websites and social media. These infographics raise patient awareness on the current state of General Practice and how practices are operating.

Some example infographics can be seen below. Feel free to pick and choose the images that are suitable for your practices needs [on our website](#).

If you would like the images in a different format [please get in touch.](#)



LMC Training Events 2025

Please see a list of upcoming training events being hosted by the LMC:

- [Complaints Training](#)
- [Conflict Management](#)
- [CQC Update](#)

To book your place or find out more information, please contact Rebecca.Noblett@nwlmc.org or view [here](#).

LMC Vacancies

2 out of our 5 Committees have seats available for GP representation:

- North Cumbria - 2 seats available
- Central Lancashire - 3 seats available

We are keen to hear from GPs, including GP Registrars/ Trainees, who may wish to get involved to represent your constituents. [Please let us know](#) if you are interested in being a LMC member or would like to find out more.

Help Us Grow Our Audience

We understand that you are busy and are likely to receive many emails on a daily basis. However it is important for you to receive communications from us because **we can help and support you.**

We know there are many colleagues who do not receive our brieflet, so please help us by sharing this with your team and letting us know to add them to our distribution lists.

Contact Us

